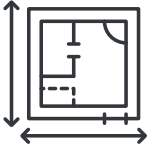


HOW TO MEASURE YOUR ROOM



1

DRAW A ROUGH SKETCH OF YOUR ROOM

This doesn't need to be a work of art or perfectly to scale. You can draw it in pencil, so you can easily erase! It's more important your measurements are accurate. See our examples on the second page.



2

TAPE MEASURE

A longer tape measure is best, around ~25' is great! This size should allow you to measure the total width and length of the room.



3

MEASURE THE OVERALL ROOM

Start by measuring the overall LENGTH and WIDTH of the room. We will add in smaller measurements afterwards. The smaller measurements will add up to our overall width and length. Please provide dimensions in inches only (not feet + inches).



4

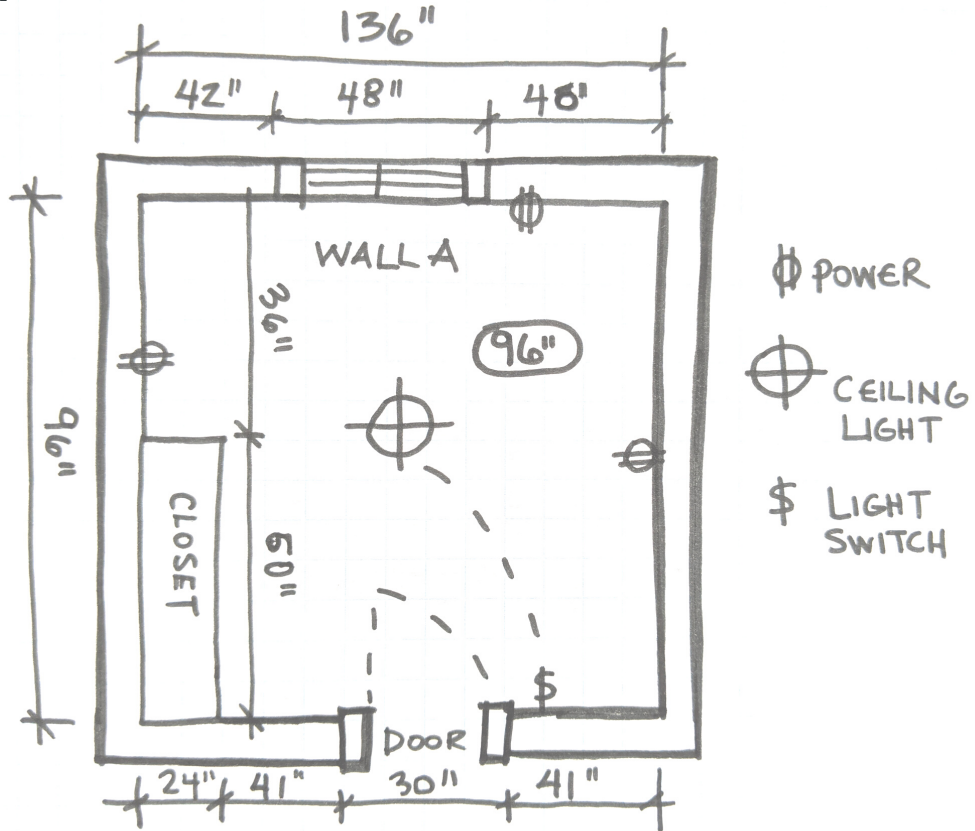
FIXTURES & ARCHITECTURAL DETAILS

Note + measure the height and width of anything you'll need to work around

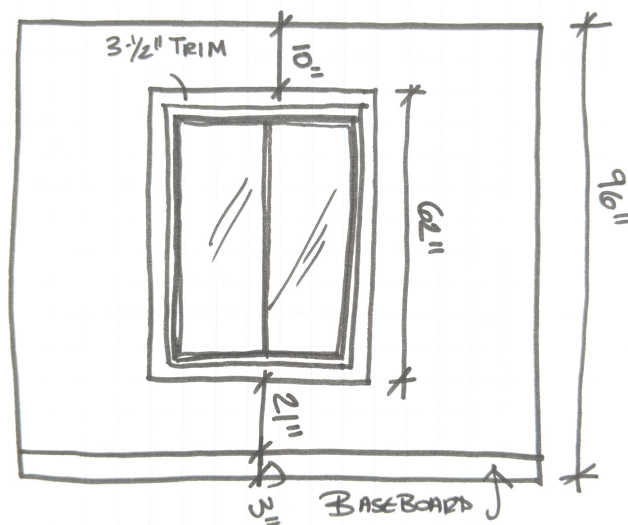
- Windows (width, height and height from the floor)
- Doors (door width and height)
- Outlets and Switches
- Air Returns
- Light Fixtures
- Ceiling Height

EXAMPLES

1 FLOOR PLAN



2 ELEVATIONS (THE WALLS OF THE ROOM)



urban source